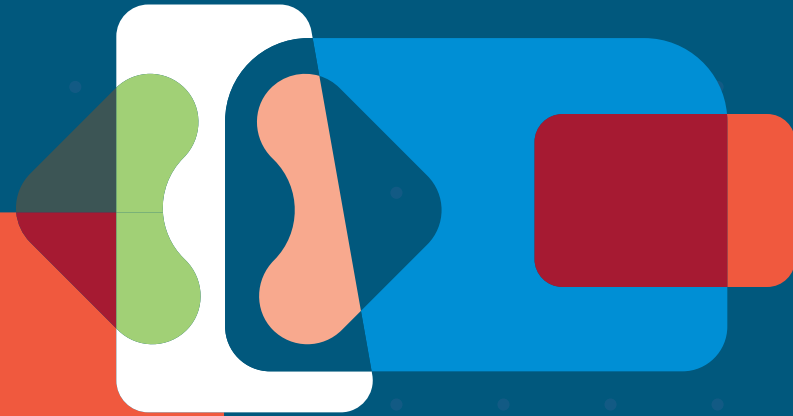


# All-in for your applications. The GuardOne<sup>®</sup> Workstation.

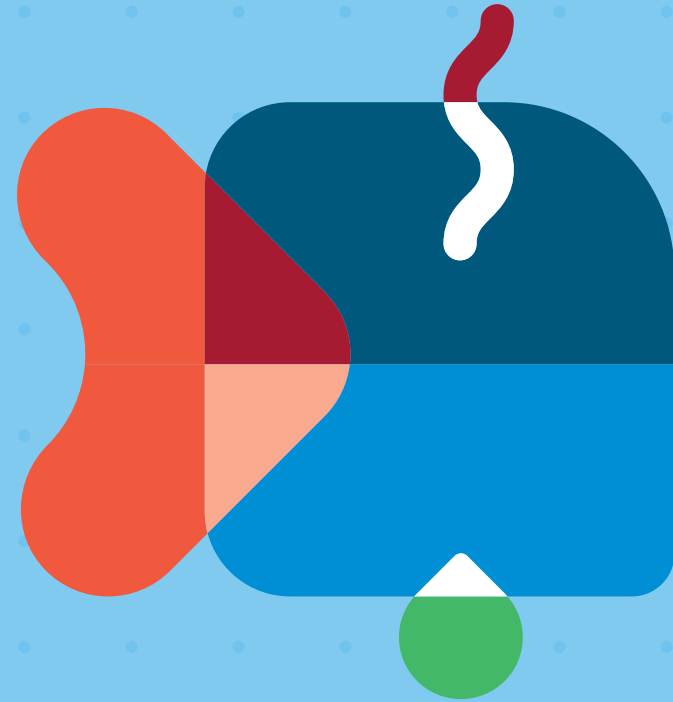


Passionate for science.



- **Product overview.**

- For your applications.
- Environmental care.
- For the nerds: the tech specs.



# Product Overview.

# We went **all-in** on this one. Except for contamination.

## TOP LID

Easy to open for an effortless, one-person filter exchange

## EASY

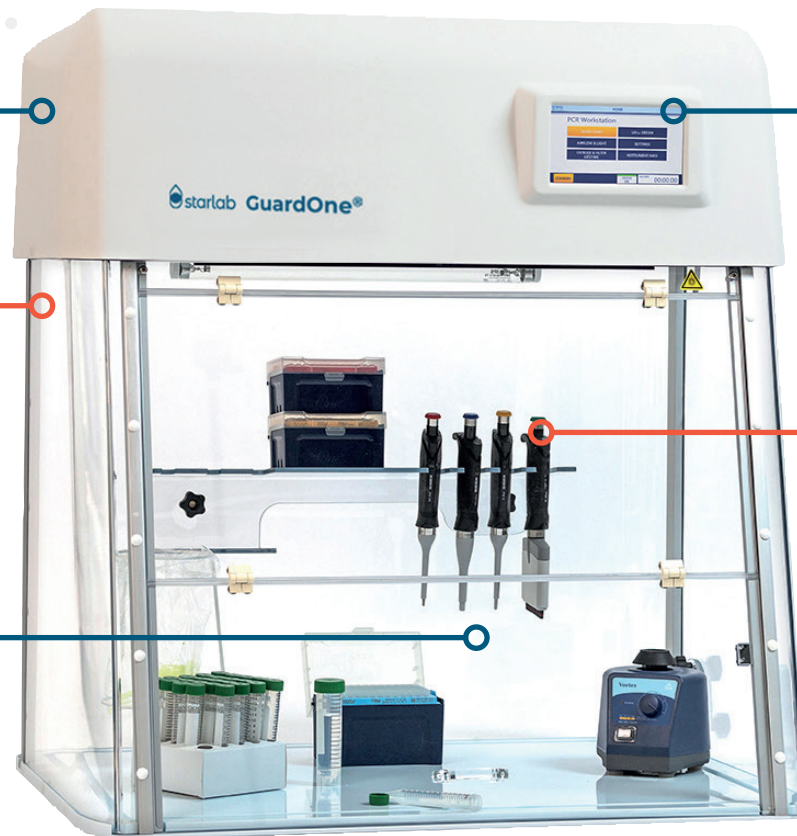
### TO ASSEMBLE

Tool-free assembly in just 15 minutes. No specialist knowledge required

## IDEAL

### WORKSPACE

for sensitive and critical applications requiring a clean environment



## INTUITIVE

### TOUCHSCREEN

Glove compatible. Convenient one-touch QuickStart / QuickStop

## HOLDS

### YOUR GEAR

Integrated shelf and pipette holder

# Safe

- Efficient UV<sub>254 nm</sub> decontamination with timer function
- Automatic UV lamp cut-off when front sash is opened
- Efficient, class H14 HEPA filter with pre-filter\*
- ISO class 5 working environment\*

# Reliable

- UV lamp lifespan surveillance
- HEPA filter lifespan surveillance\*
- Realtime airflow measurement\*
- Device status monitoring

\* Laminar Flow models only



# Easy to use

- Glove compatible touchscreen
- One-touch QuickStart / QuickStop
  - start with your preferred settings for airflow\* speed, light, and light colour (white or red)
- Virtually maintenance free
- Easy to clean

# Smart

- Minimal packaging volume and weight
- Easy, tool-free assembly
- Set up your GuardOne® in just 15 minutes
- Tool-free HEPA filter\* exchange in just 2 minutes

\* Laminar Flow models only



[www.starlab.click/guardone](http://www.starlab.click/guardone)



- Product overview.
- **For your applications.**
- Environmental care.
- For the nerds: the tech specs.



# For your applications.



# The GuardOne® Workstation: maximum protection, maximum reliability.

## WORK WITH YOUR VALUABLE SAMPLES WITHOUT CROSS-CONTAMINATION

STARLAB's GuardOne® Workstation provides the ideal workspace for sensitive and critical applications requiring a clean environment or protection from potential contamination by bacteria, DNA or RNA. The GuardOne® Workstation minimizes cross-contamination risk to protect your valuable samples and reagents, thus helping to prevent both the time and cost involved by having to duplicate contaminated work.

The GuardOne® UV lamp timer means you can easily decontaminate the working area before you start (or whenever needed), and the two stage filter system creates an ISO 5 cleanroom working environment\* to help improve your results. The adjustable airflow\* allows you to provide the perfect working environment for even the most sensitive of samples.

Every aspect of GuardOne® has been designed with convenience in mind. All functions are controlled via the intuitive and easy to use touchscreen which also features an at-a-glance color-coded workstation status indicator. This, combined with the realtime measurement of the airflow and the constant lifespan monitoring of the UV lamp and HEPA filters\* provides further confidence that your samples are safe. Oh, and there's a convenient built-in lab timer too – we thought of everything!

\* Laminar Flow models only





# Hello darkness, my old friend.

Optically-clear,  
UV-impermeable  
polycarbonate provides excellent  
visibility of the working area as  
well as full protection  
from harmful UV



High performance LED light  
system for perfect working  
conditions.

- Product overview.
- For your applications.
- **Environmental care.**
- For the nerds: the tech specs.



# Environmental care.

# The GuardOne® Workstation was designed with the environment in mind.

## MINIMAL PACKAGING VOLUME

- Innovative design reduces package volume providing a 50% SAVING\* on both space and shipping resources
- Supplied flat-packed in six pieces
- Easy to assemble without the need for tools
- No specialist knowledge needed, assemble in 15 minutes

## REDUCED WASTE

- UV lamp lifespan of up to 9000 hours
- The long lamp life significantly reduces both the cost and waste associated with frequent replacement

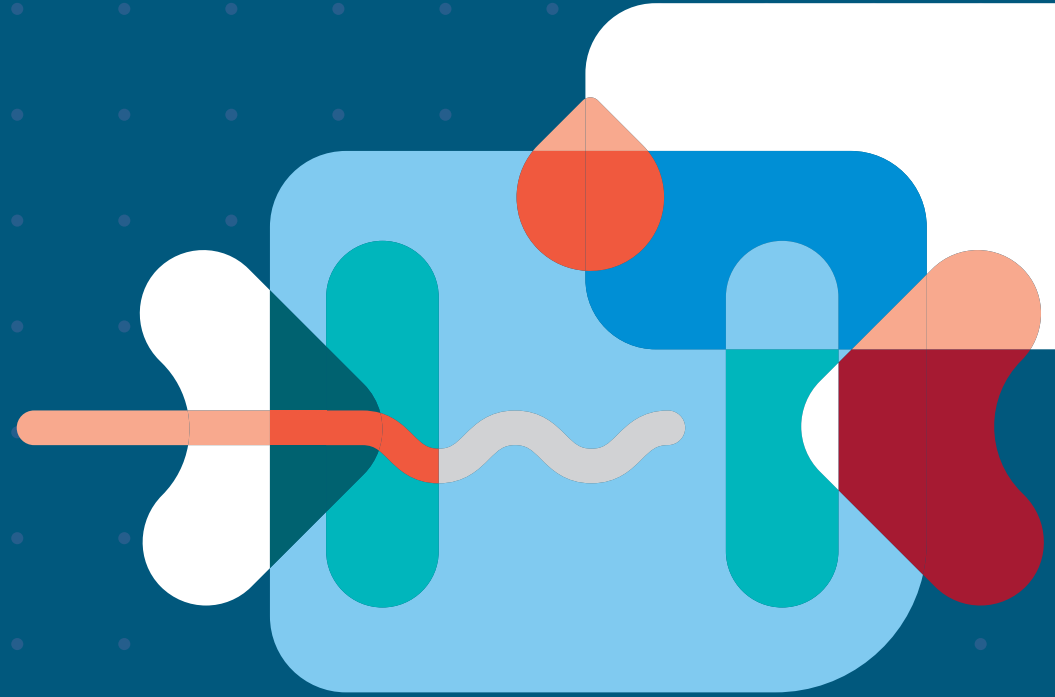
## MINIMAL POWER CONSUMPTION

- Energy-saving LED lighting
- Latest fan technology
- One of the lowest power consumptions available on the market

\*To comparable competitor products



- Product overview.
- For your applications.
- Environmental care.
- **For the nerds: the tech specs.**



# For the nerds: the tech specs.

# Starlab GuardOne® Workstation



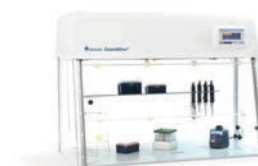
Dead Air Workstation 32"



Dead Air Workstation 48"



Laminar Flow Workstation 32"



Laminar Flow Workstation 48"

## BASIC SPECIFICATIONS

External dimensions (W x D x H)	813 x 610 x 877 mm	1220 x 610 x 877 mm	813 x 610 x 877 mm	1220 x 610 x 877 mm
Internal dimensions (W x D x H) (working area)	800 x 600 x 600 mm	1200 x 600 x 600 mm	800 x 600 x 600 mm	1200 x 600 x 600 mm
Weight	32 kg	35 kg	36 kg	42 kg
Power consumption	38 W	38 W	90 W	160 W
Lab Timer	Yes	Yes	Yes	Yes

## AIRFLOW

Air velocity	-	-	0.2 – 0.4 m/s	0.2 – 0.4 m/s
Realtime airflow measuring	-	-	Yes	Yes
Pre-filter	-	-	1x	2x
HEPA filter	-	-	1x H14	2x H14
HEPA filter lifespan monitor	-	-	yes	yes

## LIGHT

LED light intensity	1400 lux	1400 lux	1400 lux	1400 lux
UV lamp	1x 15 W	2x 15 W	1x 15 W	2x 15 W
UV lamp lifespan monitor	Yes	Yes	Yes	Yes
UV timer	Yes	Yes	Yes	Yes
UV safety switch	Yes	Yes	Yes	Yes



Cable access point  
for your electrical devices



Easy-open lid with hydraulic struts  
for effortless HEPA filter exchange



High performance,  
energy-saving  
LED lights  
(white and red)

# Order Information



Red LED light for light-sensitive applications

Optional trolley for workstation mobility around the lab

Description	Pack Size	Cat. No.
-------------	-----------	----------

### GUARDONE® DEAD AIR WORKSTATIONS <sup>1)</sup>

GuardOne® Dead Air 32" (80 cm)	1	S8040-1000
GuardOne® Dead Air 48" (120 cm)	1	S8040-1001

### GUARDONE® LAMINAR FLOW WORKSTATIONS <sup>2)</sup>

GuardOne® Laminar Flow 32" (80 cm)	1	S8040-0000
GuardOne® Laminar Flow 48" (120 cm)	1	S8040-0001

### ACCESSORIES / REPLACEMENTS

HEPA Filter for 32" laminar flow model	1	S8040-0010
HEPA Filter for 48" laminar flow model	2	S8040-0011
UV lamp for 32" models	1	S8040-0012
UV lamp for 48" models	2	S8040-0013
Pre-Filter for 32" & 48" laminar flow models	2	S8040-0014
Shelf with integrated pipette holder for 32" models	1	S8040-0015
Shelf with integrated pipette holder for 48" models	1	S8040-0016
Trolley for 32" models	1	S8040-0017
Trolley for 48" models	1	S8040-0018

1) incl. UV-lamp and shelf

2) incl. Pre-filter, HEPA filter, UV-lamp and shelf



**Starlab  
International GmbH**  
Neuer Hölftigbaum 38  
22143 Hamburg  
Germany

T: +49 (0)40 675 99 39 0  
F: +49 (0)40 675 99 39 20  
info@starlab.de  
www.starlabgroup.com

**Starlab GmbH**  
Neuer Hölftigbaum 38  
22143 Hamburg  
Germany

T: +49 (0)40 675 99 39 0  
F: +49 (0)40 675 99 39 20  
info@starlab.de  
www.starlab.de

**Starlab (UK), Ltd**  
5 Tanners Drive  
Milton Keynes MK14 5BU  
United Kingdom

T: +44 (0)1908 283800  
F: +44 (0)1908 283802  
infoline@starlab.co.uk  
www.starlab.co.uk

**Starlab France SARL**  
30 Rue Jean Rostand  
91400 Orsay  
France

T: +33 (0)1 60 13 71 70  
F: +33 (0)1 69 41 48 65  
info@starlab.fr  
www.starlab.fr

**Starlab S.r.l.**  
Via Pinturicchio 1  
20133 Milano  
Italy

T: +39 (0)2 7020 1040  
F: +39 (0)2 7020 1033  
info@starlab.it  
www.starlab.it

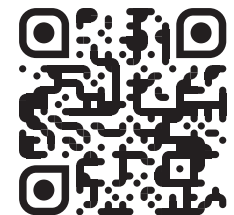


## WORK WITH YOUR VALUABLE SAMPLES WITHOUT CROSS-CONTAMINATION

STARLAB's GuardOne® Workstation provides the ideal workspace for sensitive and critical applications requiring a clean environment, or protection from potential contaminations by bacteria, DNA or RNA.

GuardOne® will minimize cross-contamination risk and protect your valuable samples and reagents, and save you both the time and cost of having to duplicate your work.

Scan QR code for more  
information & ordering



[www.starlab.click/guardone](http://www.starlab.click/guardone)